

# EC-i Control Panel

Modular Security & Control System



EliteAlarms



5 Year **Warranty**

Making every home & business smart, safe & secure



# Overview

Functions, Features & About Us



248 Inputs



32 Doors



2000 Users



32 Schedules



10,000 Events



App/Dashboard



Encrypted Cloud



Ethernet &/or 4G

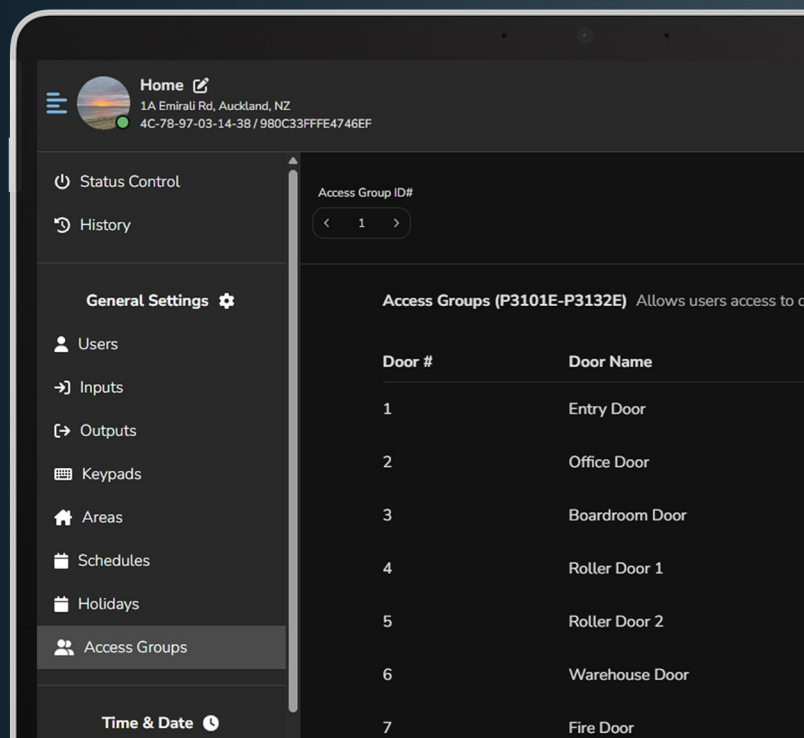


CMS Reporting



EliteAlarms & supporting cloud services are proudly designed, developed, and maintained by our dedicated team of engineers and testers in Millwater, New Zealand.

Our passion drives continuous innovation in everything we create, and we can't wait to share the journey with you.





# Solutions

One System - From Residential to Commercial



EliteAlarms



The 'EC-i' series control panel seamlessly integrates intrusion detection, access control & automation, making it ideal for residential homes, luxury properties, and small to medium commercial spaces. Its modular design ensures versatility, minimising the requirement for extra hardware.

This scalability from one system allows it to cover a wide range of requirements, making it a single, comprehensive solution for diverse security and automation needs.



Installers can add clients EC-i systems to the EliteCloud Installer Dashboard for simple management & programming, all in one place, from virtually anywhere.

**[dashboard.elitecloud.co.nz](https://dashboard.elitecloud.co.nz)**





## EC-i 4G

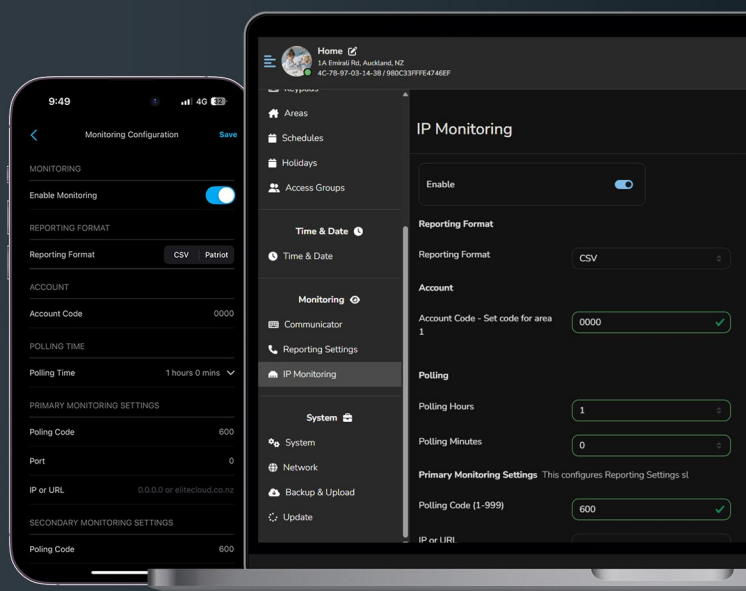
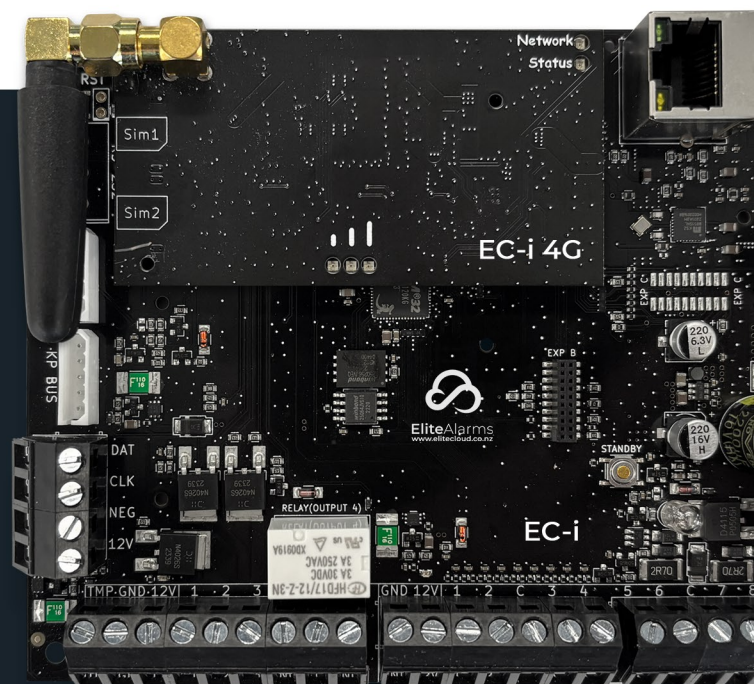
Cellular App, Dashboard & Monitoring Module



EliteAlarms

The 'EC-i 4G' plugs directly into the 'EC-i' control panel which removes the need for wiring looms or terminals & also saves real estate within the security cabinet.

Being native to the 'EC-i' control panel, the 'EC-i 4G' supports our EliteCloud services (app and dashboard) and also enables multipath central monitoring station reporting via 'CSV IP', 'Patriot IP', or 'DC-09'.

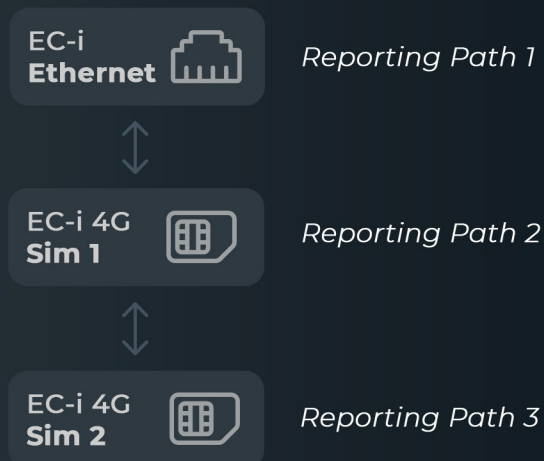


### Monitoring Configuration

Central monitoring reporting settings are configurable via the EliteCloud dashboard, app, EC-i built in web browser or traditional keypad address programming.

### Communication Redundancy

Communications may be 4G only, or as Ethernet falling back to 4G. If dual path, both paths can be tested for integrity on a regular basis providing multiple layers of connectivity in the event of a cellular or on site internet failure.





# EliteCloud Installer Dashboard

Cloud Programming & Management Tool



EliteAlarms



## Features

- View system status & control functions
- System event history with filtering
- Secure programming from virtually anywhere
- Configure IP & 4G monitoring
- Analyse control panel & accessory status
- View connected bus peripherals
- Remotely update connected bus peripherals
- Connect unlimited EC-i control panels
- Map with pin drop for each site/panel
- Selectable light/dark mode

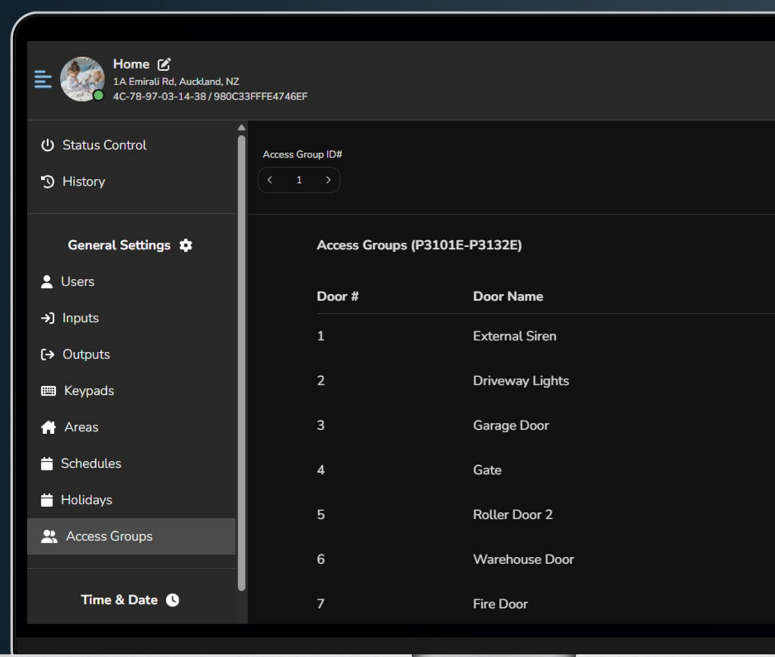
[dashboard.elitecloud.co.nz](https://dashboard.elitecloud.co.nz)



The EliteCloud app & dashboard features 2048 bit RSA SSL-TLS encryption, providing a secure connection between your device & your customers control panel.

Final programming can be adjusted via laptop, tablet or smartphone, all while standing next to the door, sensor, keypad or area that you are working on.

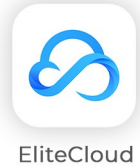
Simple programming and management whether you are on site or working remotely.





# EliteCloud App

Compatible with EC-i, ESL & Runner Control Panels  
(*'ESL' & 'Runner' require separate ethernet interface modules*)



Stay in Touch with your home or business from almost anywhere.

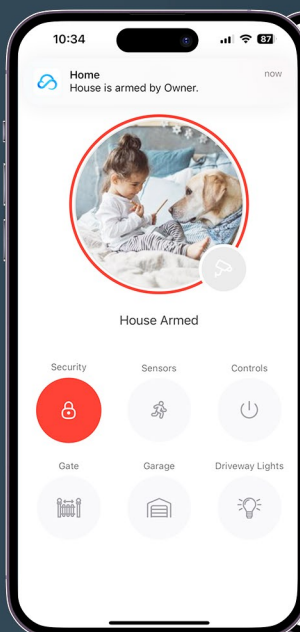
The EliteCloud app supports alarm, access control, monitoring & other control functions, along with custom push notifications directly to your Apple or Android smart device.



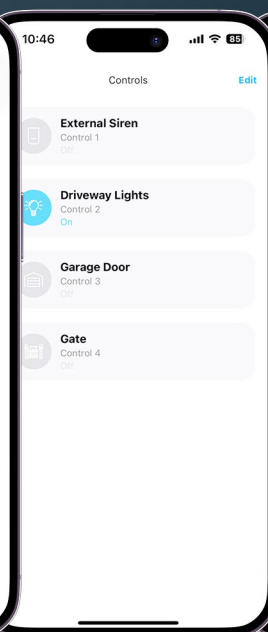
## Features

- System history
- CCTV Integration
- Live sensor status
- User management
- Control up to 32 functions
- View & arm/disarm up to 32 areas
- Customisable push notifications
- Ongoing feature enhancement

### Home



### Control



### CCTV



### Watch







The EC-KP is one of the most discrete alarm keypads available, pairing seamlessly with most light switch plates in your home or business.

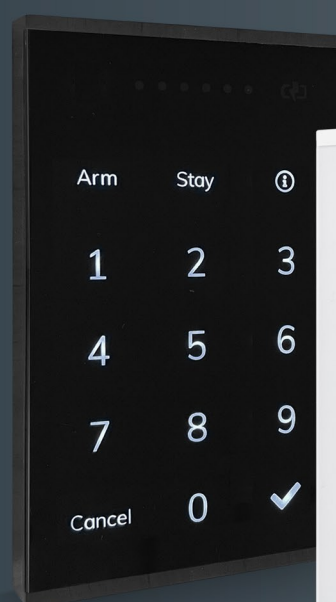
Customisable backlight & sleep options allow users to configure each keypad for rooms or hallways where low light, or no light is often essential.

### Features

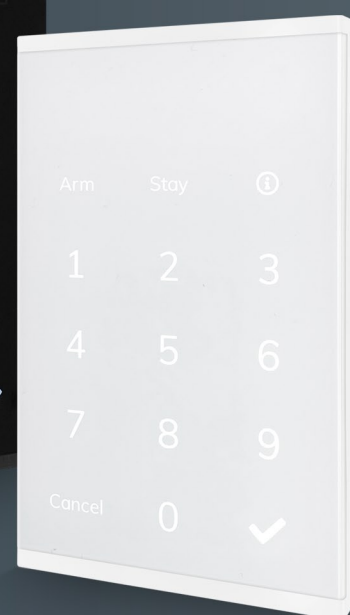
- 5 year warranty
- Multiple display/sleep options
- Aligns with many light switch plates
- Adjustable brightness & beep tone
- Simple surface mount installation
- Wake upon touch function
- Supports traditional 'address' programming
- New Zealand designed & manufactured
- Dimensions: H118 x W74 x D12mm
- Available in white or black

### Compatible Control Panels

EC-i, ESL, Elite S & Runner



EC-KP B



EC-KP W



# EC-TOUCH

## Customisable Touch Screen Interface

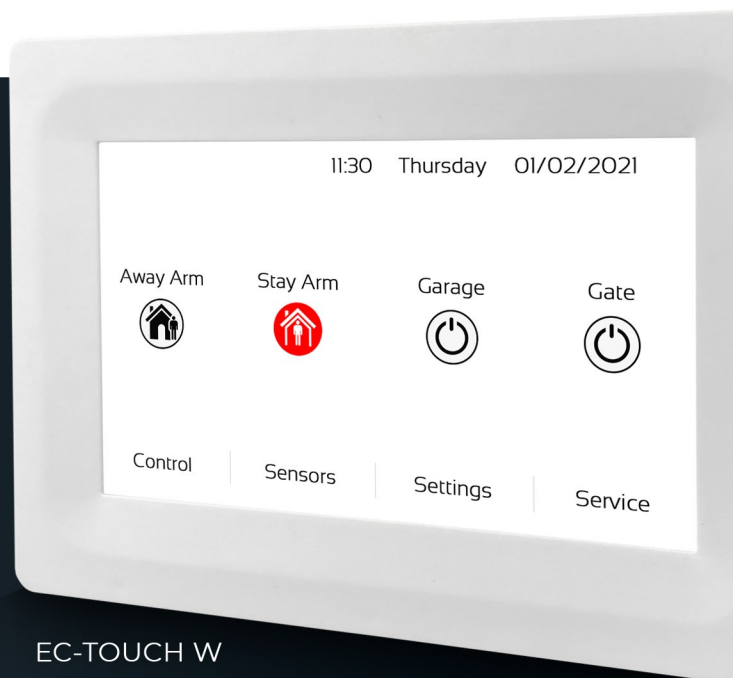


EliteAlarms

Intuitive user interface for smooth alarm operations, custom programming & review without the use of a manual.

Select your own themes, screen savers & background images to suit your home or business.

Up to 10 quick access buttons can be added to the EC-TOUCH home screen for security, control or a combination of your choice.



EC-TOUCH W



EC-TOUCH B

### Features

- Intuitive graphic user interface
- 5 year warranty
- 5" touch display
- Sharp 800 x 480 pixels
- Simple surface mount installation
- Built in SD port for custom images
- SD card included
- Setup wizard for simple installation
- New Zealand designed & manufactured
- Available in white or charcoal

### Compatible Control Panels

EC-i, ESL, Elite S & Runner



The EC-LCD is a durable and versatile keypad, specifically engineered for harsh environments such as workshops and high-traffic areas.

It features zone bypass to deactivate selected sensors before arming, multi-language support, adjustable backlighting as well as dedicated keys for fire, panic, and medical emergencies.



### Features

- 5 year warranty
- Multiple language options
- Brightness adjustment
- Beep/Tone adjustment
- Door/Gate/Output control
- Sensor bypass function
- Dual press panic fire & medical buttons
- Optional quick Arm/Disarm & Stay Arm/Disarm
- New Zealand designed & manufactured
- Dimensions: H135 x W89 x D24mm



# Bus Peripherals

Input, Output & Access Control Expansion



EliteAlarms



## EC-Z8

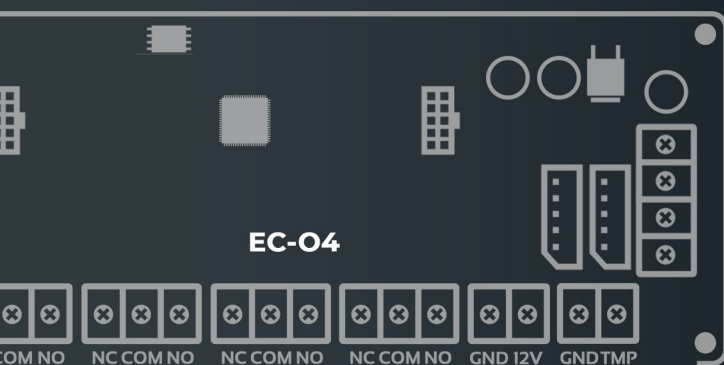
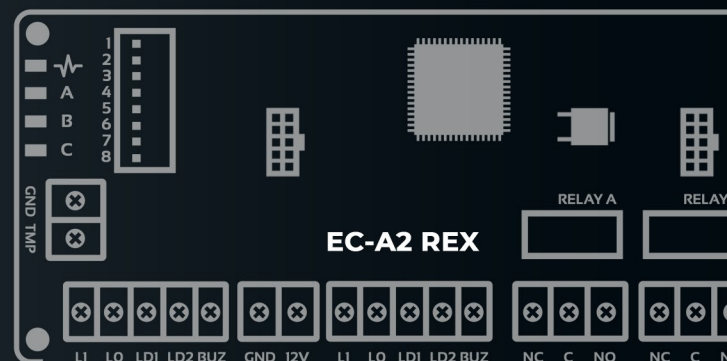
### 8 Input Expander Module

- 8 Configurable inputs
- 2 Quick connect keypad bus sockets
- On board system tamper
- Add up to 30 x EC-Z8 modules to 1 x EC-i
- Plug in terminals
- Bus updateable from EC-i control panel

## EC-A2 REX

### 2 Door Access Control Module

- 2 Wiegand inputs
- 2 Configurable inputs + 2 dedicated REX inputs
- 2 Configurable outputs
- Add up to 32 x EC-A2 REX modules to one EC-i
- Plug in terminals
- Bus updateable from EC-i control panel



## EC-O4

### 4 output expander module

- 4 configurable outputs
- 2 quick connect keypad bus sockets
- On board system tamper
- Add up to 8 x EC-O4 modules to 1 x EC-i
- Plug in terminals
- Bus updateable from EC-i control panel



# Integrated Access Control

## 2 Door Access Control Module for EC-i Control Panels



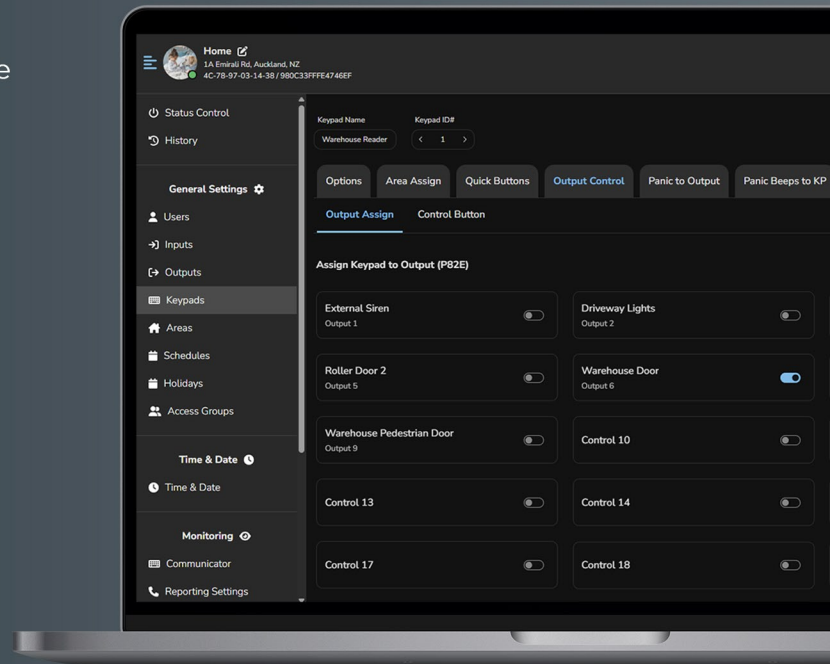
EliteAlarms

Keypads, readers & biometric devices can be connected to the 'EC-i' system via the 'EC-A2 REX' module, creating seamless integration of alarm & access control functions without 3rd party components.

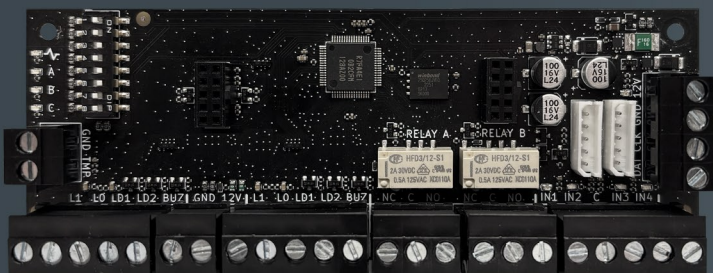
Connect doors or gates to the 'EC-A2 REX' for simple control via access reader/keypad, EliteCloud app, EliteCloud dashboard, web browser, schedule or alarm keypad.

### EC-A2 REX Features

- Control up to 2 doors per EC-A2 REX
- Comm bus isolation protection
- On board REX & monitoring inputs
- On board system tamper
- Control up to 32 doors per EC-i control panel
- Optional plug in supply (EC-PSU2 or EC-PSU4)
- Supports 'PW WIEGAND' & other selected readers
- Integrated alarm & access control functions
- 5 year warranty



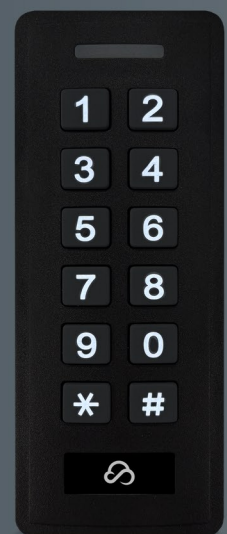
EC-A2 REX



PW WIEGAND NK



PW WIEGAND





# Long Range Wireless

2 Way Wireless for EC-i, ESL, Elite S & Runner



infinity wireless has been developed to allow installation of professional, correctly positioned products without excessive labour, unpleasant trunking or conduit.

With up to 500m range, almost any site can be accurately secured.

## Features

- 5 year warranty
- Simple installation
- Up to 500m range
- Up to 5 year battery life
- Battery low, tamper & supervision
- Flexible indoor & outdoor solutions
- Add up to 248 wireless sensors per EC-i
- Haptic feedback (infinity remote & panic)
- New Zealand designed & manufactured



Battery Low



Supervision



Haptic Feedback



Encrypted



Up to 500m Range



Cloud Learning

infinity remote



infinity panic



infinity output



infinity input



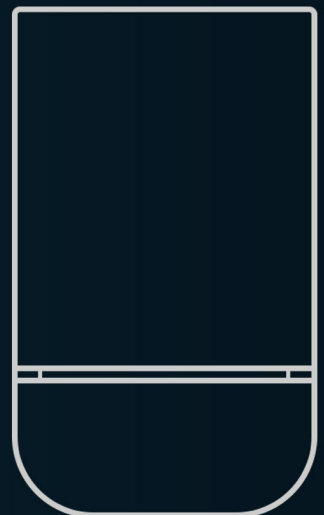
infinity motion



infinity motion IP54



infinity siren

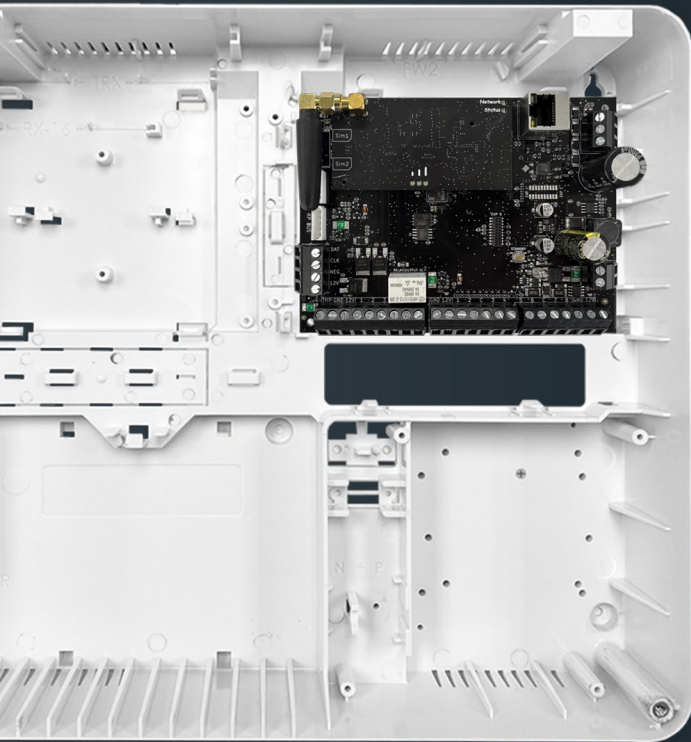




## Standard Residential Solution



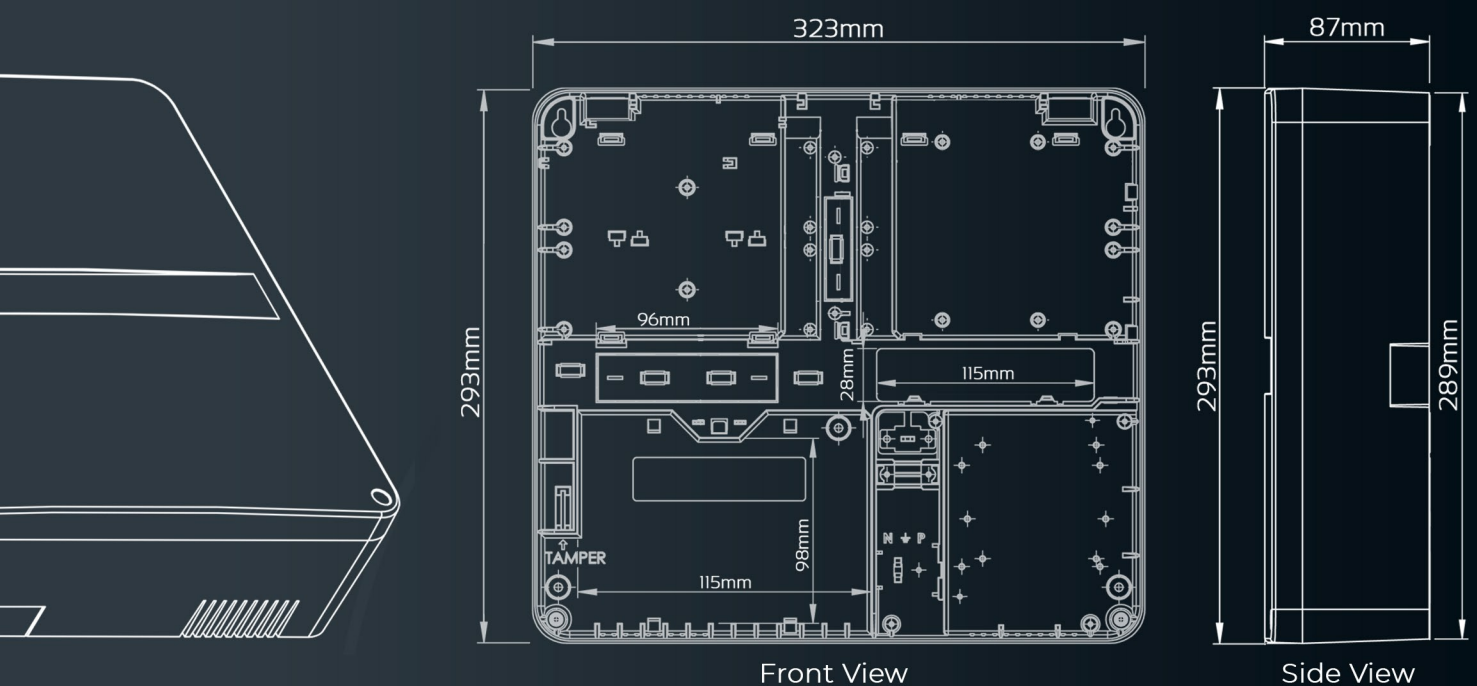
**EC-CAB** (PCB not included)



Standard 'EC-CAB' plastic enclosures are commonly available from your local EliteAlarms distributor & are suitable for small to medium intrusion installations & small access control applications.

Each 'EC-CAB' supports either 1 x 'EC-i' control panel & 2 x Expander modules, OR 4 x Expander modules.

1 x 12V 7A SLA backup battery can also be accommodated, along with a 16VAC transformer or other accessories when using a plug in power supply. Lid/wall tamper optional 'EC-TAMPER P'.





# Cabinets & Mounting

High End Residential & Commercial Solutions



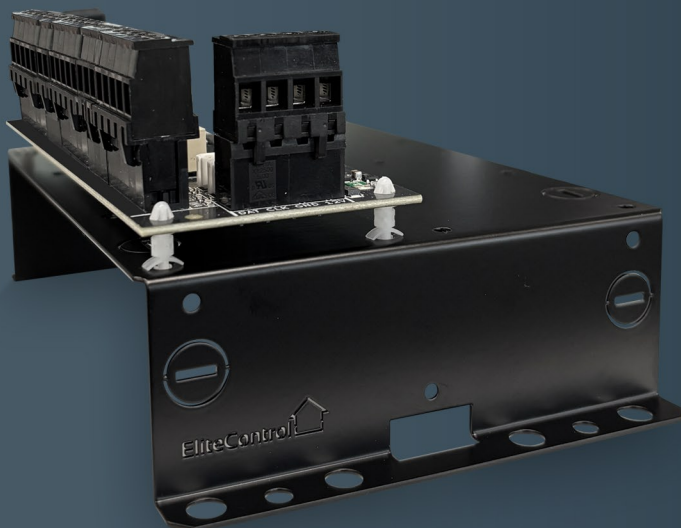
EliteAlarms

When your project exceeds the capacity of our standard plastic enclosure (EC-CAB), we recommend upgrading to a structured cabling cabinet solution, such as the 'SCC-28'.

This 'SCC-28' example is supporting 24 x Inputs, 8 x Outputs & 8 x Access-Controlled Doors.

EliteAlarm plug-in power supplies (such as the EC-PSU2) connect directly onto the 'EC-A2 REX', 'EC-Z8', or 'EC-O4' expander modules. These 'EC-PSU' deliver supervised, battery-backed power not only to the connected module, but also to any downstream devices.

SCC-28



The 'EC-i' control panel and EC expander modules can be mounted directly on top of the 'EC-SCC-PSU' or 'EC-SCC-PSU5' power supplies, streamlining installation and saving space.

For applications where a 'EC-SCC' power supply is not required, the 'EC-SCC PLATE' provides a convenient and secure mounting alternative.



# Power Supplies

Commercial & Large Residential Power Options



Mounts directly into structured cabling cabinets for large residential 'intrusion' installations or small 'access control' applications. Provides power to 1 x 'EC-i' control panel & also 1 x 'EC-PSU2' power module, OR 2 x 'EC-PSU2' power modules (see below).

24VDC, 2.2A (IEC cable included).



EC-SCC PSU



EC-PSU2

Plugs directly into the 'EC-A2 REX', 'EC-Z8' or 'EC-O4' bus expander modules to provide up to 1.5A @ 13.8VDC to the module it is plugged into & any connected modules downstream.

This PSU features dynamic battery monitoring & 15-24V AC/DC power input monitoring, plus bus supervision back to the EC-i control panel.

(Requires separate 15 - 24V AC or DC supply).

Mounts directly into structured cabling cabinets for comprehensive 'access control' applications. Can be used standalone, or top PCB removed and plugged into any of the 'EC-A2 REX', 'EC-Z8' or 'EC-O4' expander modules. Supports 1A battery charging.

13.8VDC 5A (IEC cable included).



EC-SCC PSU5



# About Us

Legacy & Innovation



EliteAlarms

- Founded in 1986, EliteAlarms is a proudly New Zealand owned and operated company, delivering advanced security solutions with a strong local and global footprint. Our alarm systems are designed, manufactured, and tested right here in New Zealand, ensuring the highest standards of quality and reliability.
- Operating from a purpose-built facility equipped with high-speed pick and place machines, we maintain full control over our production process. All hardware and software development is handled in-house by our expert engineers, allowing for rapid innovation and agile response to customer feedback—no outsourcing involved.
- Now in its 10th generation, the EliteAlarm system is the result of decades of refinement and user-focused development. Our commitment to excellence extends to our extensive training and support programs for distributors and technicians, ensuring seamless installation and maintenance experiences.
- With over 200,000 homes protected across more than 25 countries, EliteAlarms is trusted worldwide for delivering security solutions that combine cutting-edge technology with exceptional service.

## Contact

Visit our website or contact your local distributor for more information